

A Citizen's Guide To Proposed Franklin High School Master Plan Options



Over the last few months the Franklin community has helped develop a series of Master Plan options for the new Franklin High. Join us by reviewing this document and then taking our online survey to provide your feedback on the selection of a site plan for Franklin. Then come to the upcoming Rebuilding Franklin Open House to review the preferred option created by the Design Team using your feedback.

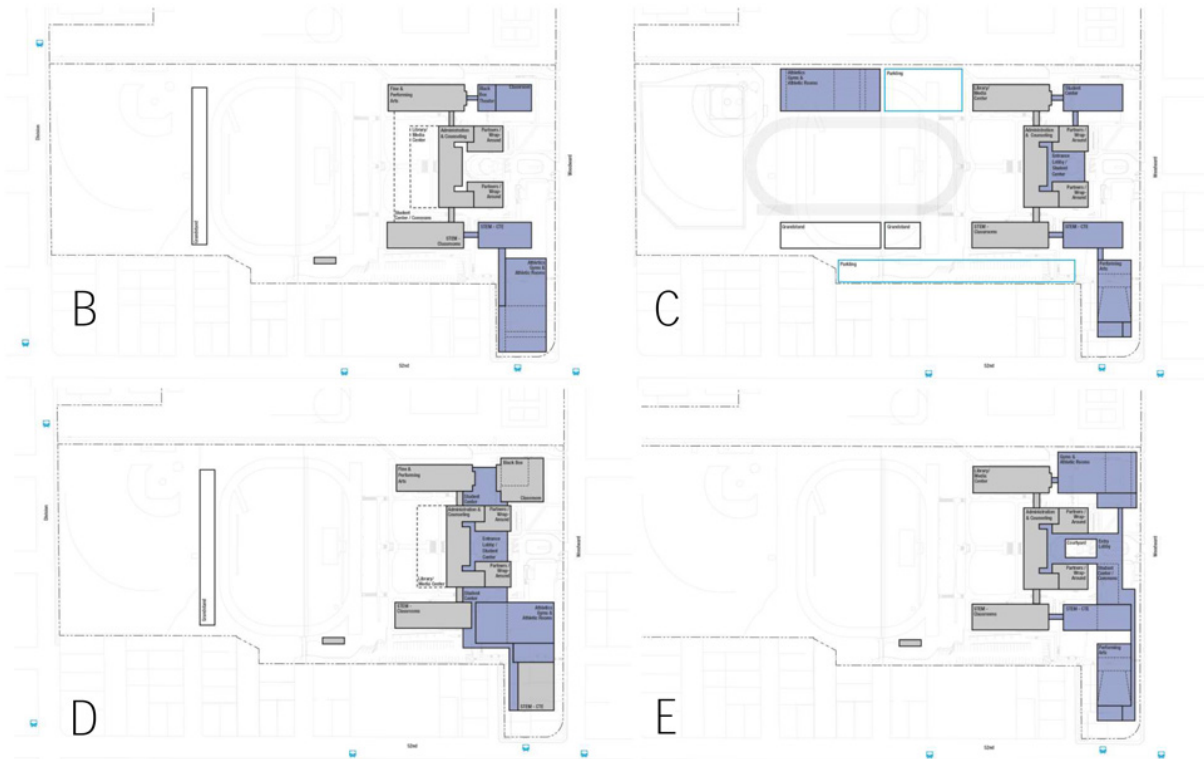
The Rebuilding Franklin Open House is on Wednesday November 20th from 5:30 p.m. to 7:00 p.m. in the Franklin Cafeteria, 5405 SE Woodward Ave

[Click here to go to the online survey](#)

[Click here to return to the Franklin Bond Web Page](#)

4 master plan options are under consideration

FRANKLIN HS – MASTER PLAN OPTIONS



Dull Olson Weekes – IBI Group Architects
Portland Public Schools – Franklin HS Modernization

21st Century Learning in an Historic Building
October 26, 2013

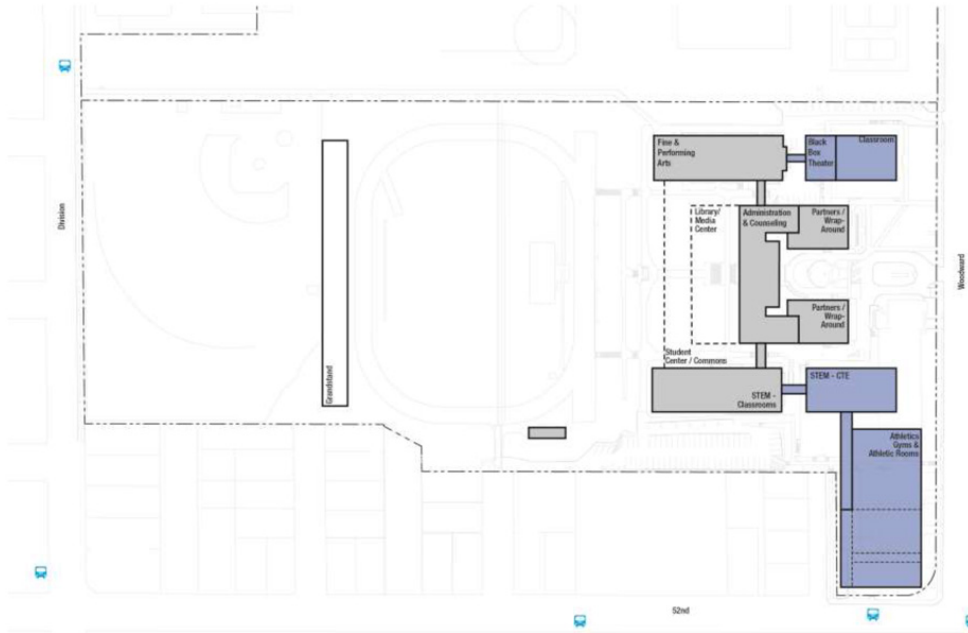


Citizens, students, staff and families selected the four master plan options on the following pages from an even larger slate of plan options. These four were considered the best schemes to fulfill the needs of a new 21st Century Franklin High. There is no Option A because it was not one of the schemes that made the final cut.

Each following plan option will have a brief description of that plan's unique elements.

Franklin Master Plan Option B

FRANKLIN HS – MASTER PLAN OPTION B



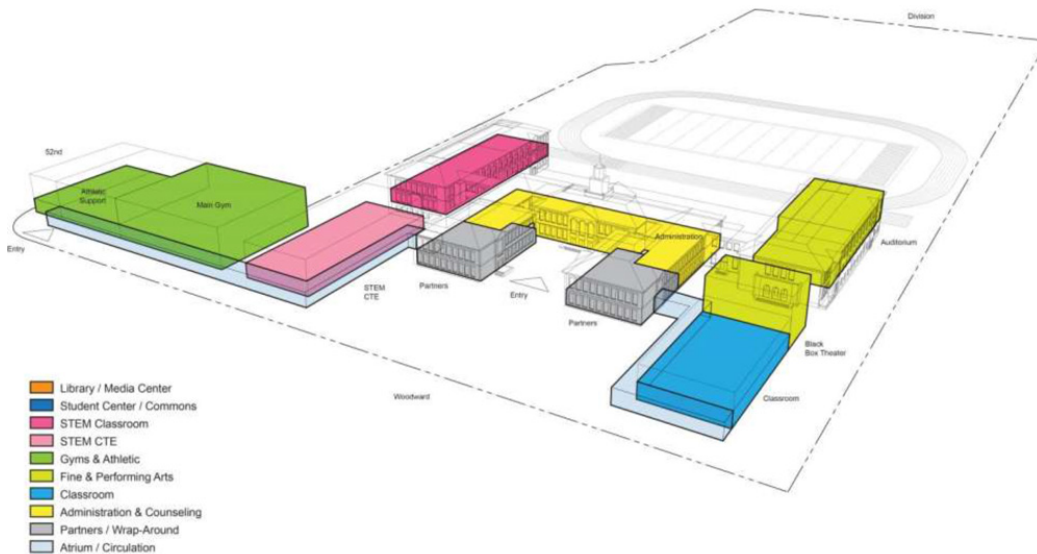
IBI GROUP
Dull Olson Weekes – IBI Group Architects
Portland Public Schools – Franklin HS Modernization

21st Century Learning in an Historic Building
October 26, 2013



Option B Plan View

FRANKLIN HS – MASTER PLAN OPTION B – FIRST FLOOR



- Library / Media Center
- Student Center / Commons
- STEM Classroom
- STEM CTE
- Gyms & Athletic
- Fine & Performing Arts
- Classroom
- Administration & Counseling
- Partners / Wrap-Around
- Atrium / Circulation



IBI GROUP
Dull Olson Weekes – IBI Group Architects
Portland Public Schools – Franklin HS Modernization

21st Century Learning in an Historic Building
October 26, 2013



Option B Elevation View

Franklin Master Plan Option B Plan Element Description

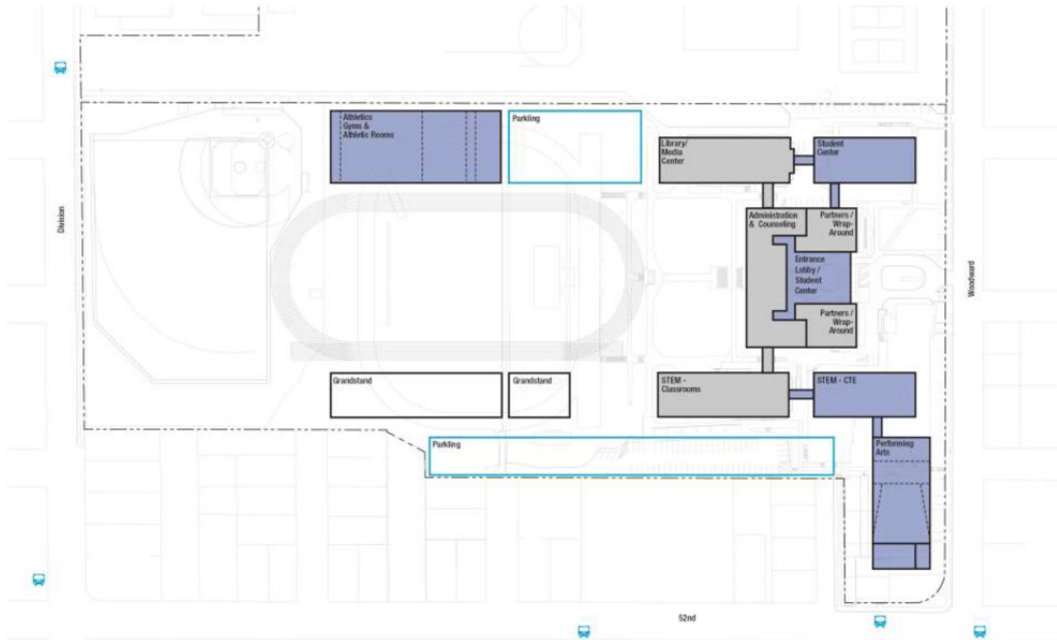
Option B locates a Media Center and Student Center/Commons at the heart of the campus, beneath the historic North Lawn to preserve views to the historic building from Division Street. These spaces utilize floor to ceiling glass along the north edge to flood student activities with diffused light and to capitalize on expansive views of the track, athletic fields, and Mt. Tabor beyond.

A renovated existing auditorium is augmented by a new black box theater to create a modern Performing Arts Center. Aerobic studios and a student shop provide transparency and activity along the edge of new athletic facilities located at the corner of 52nd Street and Woodward Avenue.

A new Science, Technology, Engineering, and Math Continuing Technology Education (STEM CTE) Center will be developed in new construction along Woodward, to the South of existing Science and Math Classrooms. The balance of existing spaces in the existing historic main building will be utilized for administration, counseling, and renovated general education classrooms.

Franklin Master Plan Option C

FRANKLIN HS – MASTER PLAN OPTION C



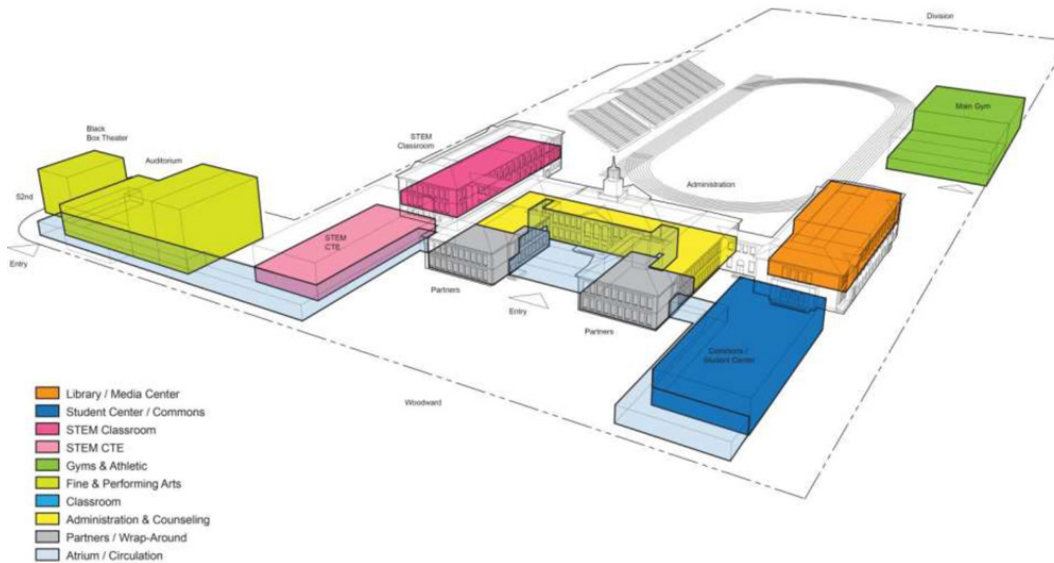
Dull Olson Weekes – IBI Group Architects
Portland Public Schools – Franklin HS Modernization

21st Century Learning in an Historic Building
October 26, 2013



Option C Plan View

FRANKLIN HS – MASTER PLAN OPTION C – FIRST FLOOR



Dull Olson Weekes – IBI Group Architects
Portland Public Schools – Franklin HS Modernization

21st Century Learning in an Historic Building
October 26, 2013



Option C Elevation View

Franklin Master Plan Option C Plan Element Description

Option C A new Performing Arts Center, located at the corner of 52nd and Woodward, along with a new Athletic Building, located to the east of a re-oriented running track, highlight **Option B**. Sited to the North of the existing High School, a new grandstand and Athletic Building frame views of the historic Division Street building façade.

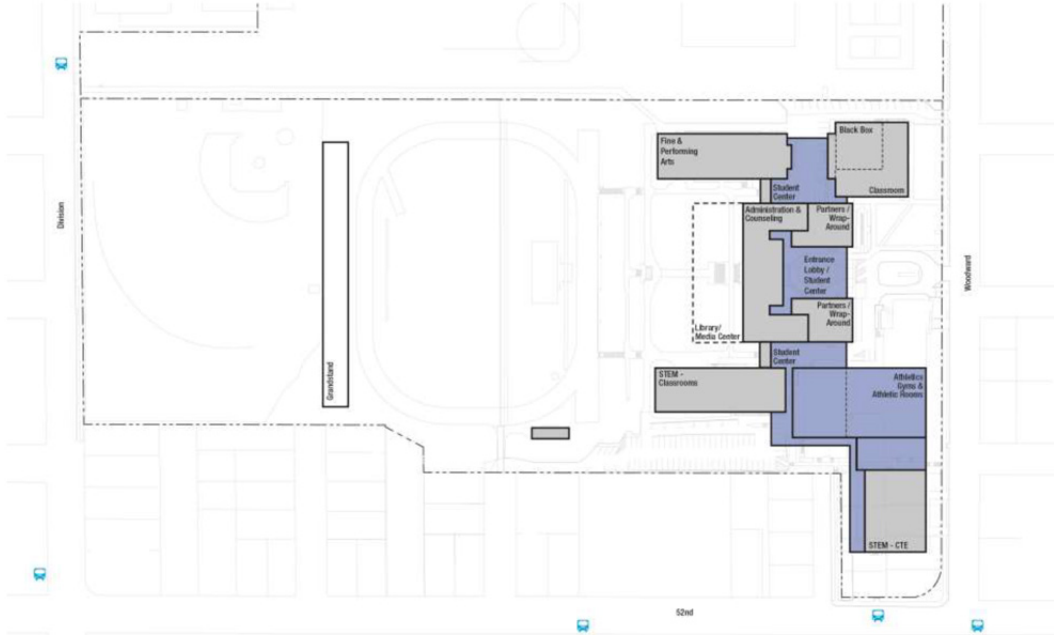
A Media Center will take full advantage of the existing auditorium, preserving the character and openness of the space. Existing balconies, expansive arched windows, and the proscenium arch combine to set the stage for modern research and inquiry while providing a glimpse into the academic lives of previous generations.

A new transparent glass atrium enclosure of the Woodward street entrance pediment and courtyard will provide a day lit environment for Student Center gathering while a new multi-story structure located within the footprint of the existing gymnasium will provide space for Student Center dining.

A new Science, Technology, Engineering, and Math Continuing Technology Education (STEM CTE) Center will be developed in new construction along Woodward, to the South of existing Science and Math Classrooms. The balance of existing spaces in the existing historic main building will be utilized for administration, counseling, and renovated general education classrooms.

Franklin Master Plan Option D

FRANKLIN HS – MASTER PLAN OPTION D



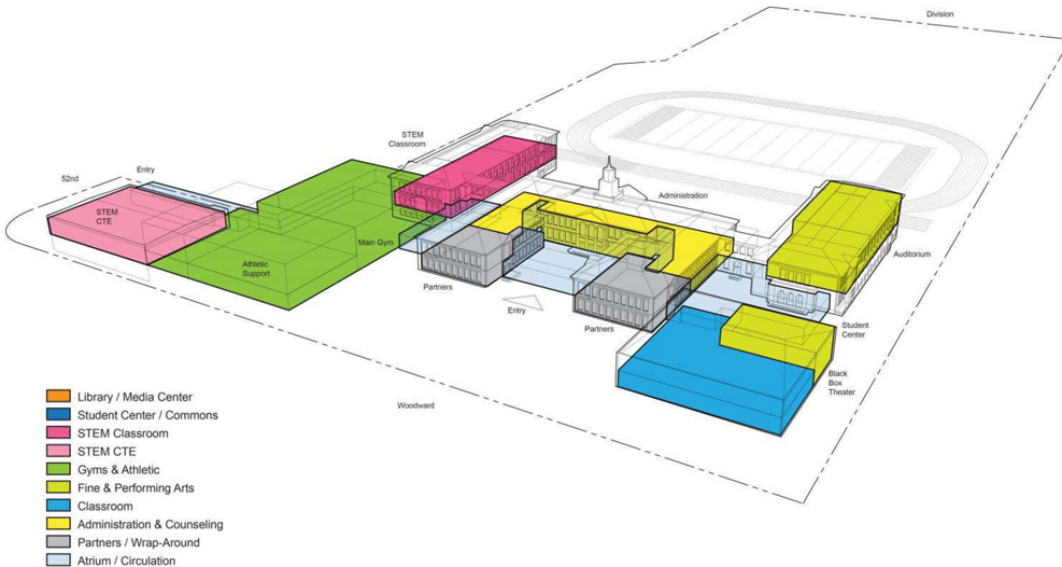
Dull Olson Weekes – IBI Group Architects
Portland Public Schools – Franklin HS Modernization

21st Century Learning in an Historic Building
October 26, 2013



Option D Plan View

FRANKLIN HS – MASTER PLAN OPTION D – FIRST FLOOR



- Library / Media Center
- Student Center / Commons
- STEM Classroom
- STEM CTE
- Gyms & Athletic
- Fine & Performing Arts
- Classroom
- Administration & Counseling
- Partners / Wrap-Around
- Atrium / Circulation



Dull Olson Weekes – IBI Group Architects
Portland Public Schools – Franklin HS Modernization

21st Century Learning in an Historic Building
October 26, 2013



Option D Elevation View

Franklin Master Plan Option D Plan Element Description

Option D provides a series of glass enclosed Student Center environments, including a new entrance atrium, combine to form a chain of core spaces linking new and existing structures.

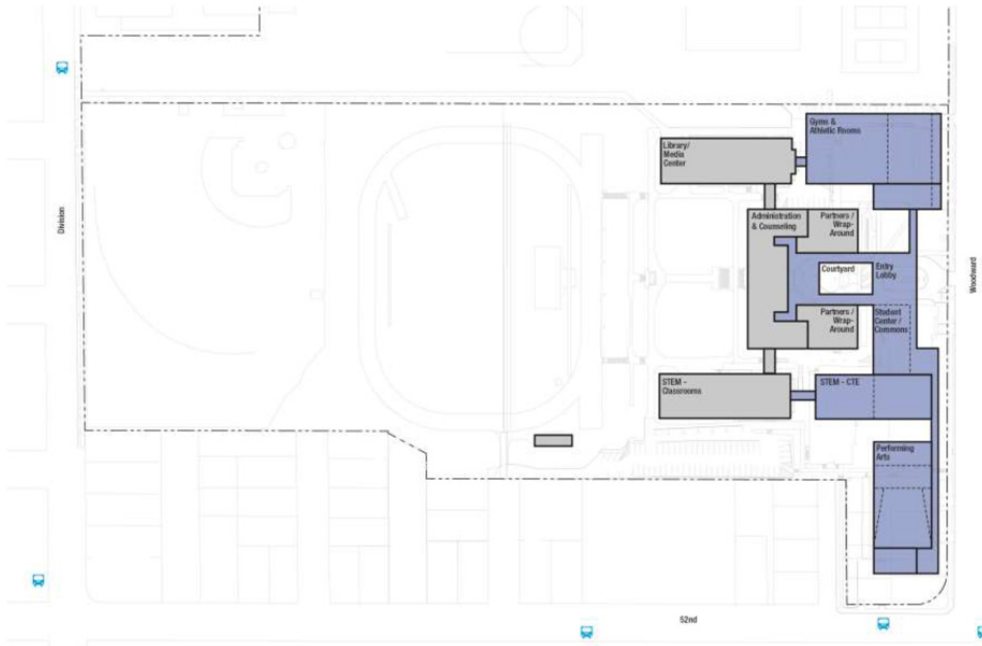
A Media Center located adjacent to the chain and below the North Lawn, provides centrally located spaces for research, inquiry, and quiet study while still preserving views to the historic building from Division Street.

Additionally, Option D envisions flexible STEM CTE space within a renovated and reimagined shop building, a new athletic complex to the south of the existing west wing, and new classroom space and black box theater within a renovated existing gymnasium building.

As in other Options, the balance of existing spaces in the existing historic main building will be utilized for administration, counseling, and renovated general education classrooms.

Franklin Master Plan Option E

FRANKLIN HS – MASTER PLAN OPTION E



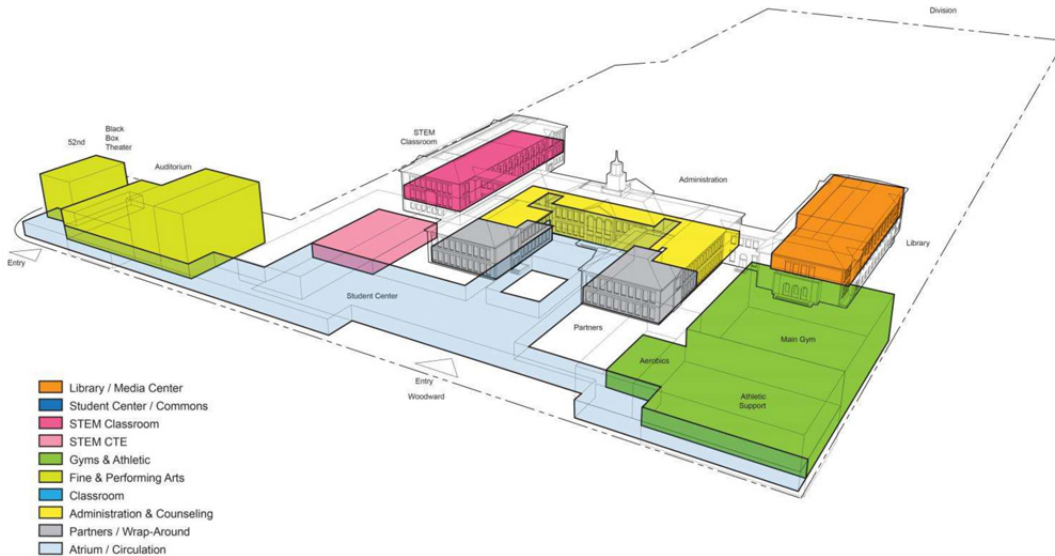
Dull Olson Weekes – IBI Group Architects
Portland Public Schools – Franklin HS Modernization

21st Century Learning in an Historic Building
October 26, 2013



Option E Plan View

FRANKLIN HS – MASTER PLAN OPTION E – FIRST FLOOR



Dull Olson Weekes – IBI Group Architects
Portland Public Schools – Franklin HS Modernization

21st Century Learning in an Historic Building
October 26, 2013



Option E Elevation View

Franklin Master Plan Option E Plan Element Description

Option E concentrates all new construction along Woodward Avenue in order to create a protected pathway of interconnected, active program areas for students approaching the school along primary Woodward pathways. Culturally significant views from Division Street are thus unaffected, preserving a symbol of 20th Century education, while providing a complementary embodiment of modern educational philosophies in the renovated interior.

This network is envisioned as interconnected one story pedestrian walkways, glass enclosed student spaces, and defined courtyards that filter and focus views onto the iconic façade, pediment, and cupola. Dubbed the Woodward String, the network provides varied Student Center environments for social activities that string together new spaces for Fine and Performing Arts, STEM CTE, and Athletics.

The balance of existing spaces in the existing historic main building will be utilized for administration, counseling, and renovated general education classrooms.

Give Us Your Feedback

FRANKLIN HS – MASTER PLAN OPTIONS



Dull Olson Weekes – IBI Group Architects
Portland Public Schools – Franklin HS Modernization

21st Century Learning in an Historic Building
October 26, 2013



After carefully reviewing these options visit the [Franklin Bond website](#) and give us your opinions through [our online survey](#). Your ideas and thoughts will give our design team invaluable insights that they can use in creating a preferred site plan that will be presented to the public at the upcoming Rebuilding Franklin Open House.

The Rebuilding Franklin Open House is on Wednesday November 20th from 5:30 p.m. to 7:00 p.m. in the Franklin Cafeteria, 5405 SE Woodward Ave

[Click here to go to the online survey](#)

[Click here to return to the Franklin Bond Web Page](#)